



PRESS RELEASE **scanware**

JUST THE RIGHT DASH OF NEW – LYNX-SPECTRA HR

Bickenbach, Germany, September 19, 2013: Concerning product inspection in the pharmaceutical industries, scanware is presenting a number of improvements for the high-resolution colour inspection system LYNX-SPECTRA HR.

scanware LYNX-SPECTRA Vision System

Formats found: 10

Filter formats

Format name: ALL

Format version: latest all

Advanced options: No Yes

Number of blisters in format: 2

Number of objects per blister: 15

Format created by: Operator D

Modified after: 2012-07-01

Modified before: 2013-08-01

Reset Abort Apply

Reference: ALL-3 User: Operator D 2013-09-13 09:56:28

Load format

Change format

Display reference image

Save format

Format test

Test run

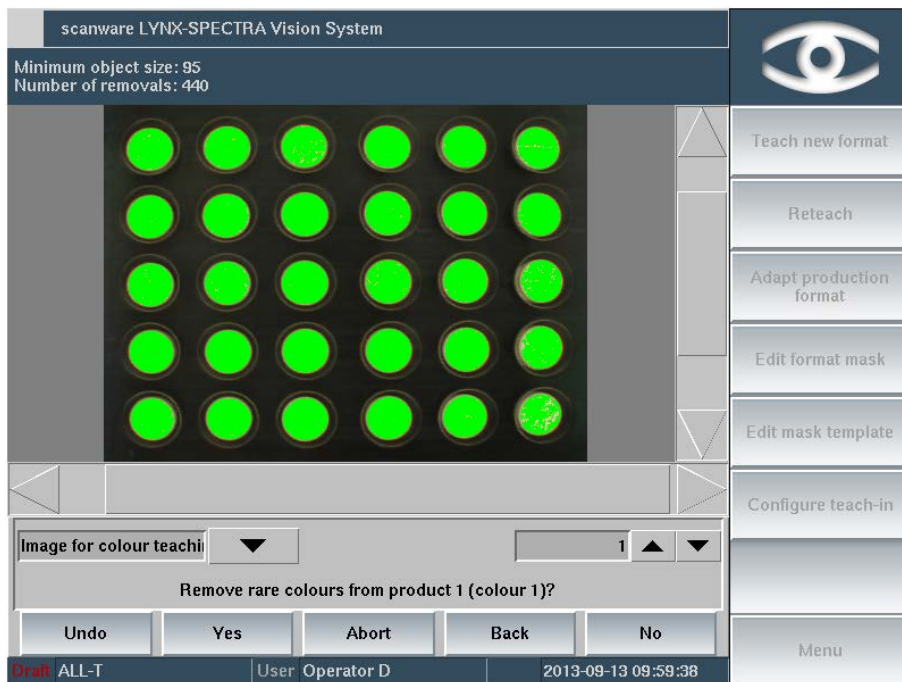
Menu

The system now features a filtering function for reference and draft formats. This speeds up teach-ins, particularly for producers with a large product variety.

For medical strips, an alternative form of administration of active agents as a strip which quickly dissolves on the tongue, scanware has developed a software for the recognition of print on the strips. Since the product fills almost the entire area under inspection, but the actual object is the small print, it is now possible to define the object as the opposite of the background. This, the colour of the strip can be marked as the background colour. The remaining area consequently is defined as object colour – manual selection of the object is no longer necessary.

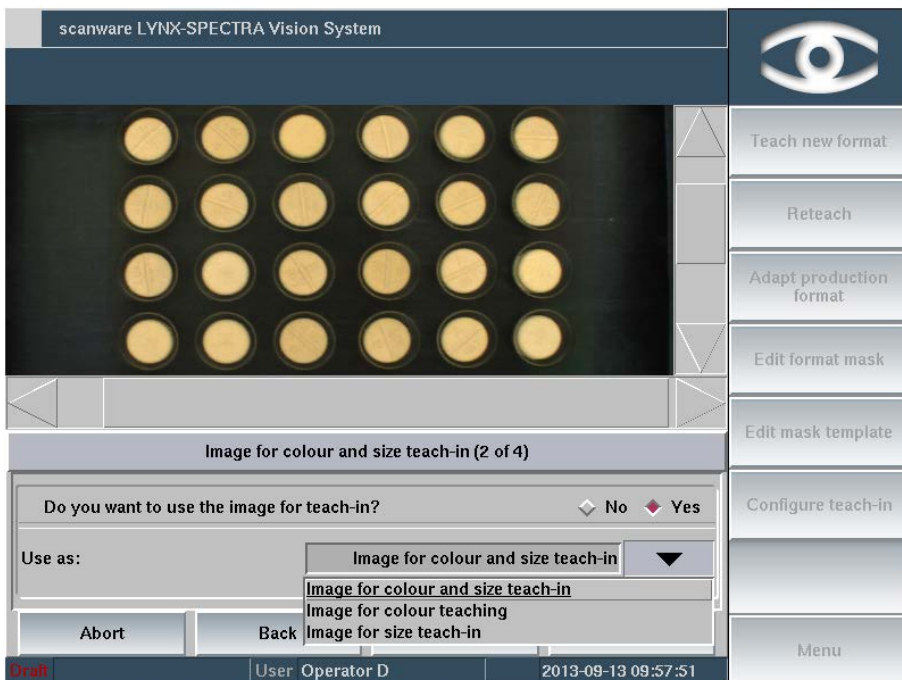


PRESS RELEASE **scanware**



There are also improvements for products that are more common. Rare colours caused by reflections are automatically removed from the specified colour cluster thanks to a new statistical method. This

is a lot more comfortable than manually selection using a magnifying tool.

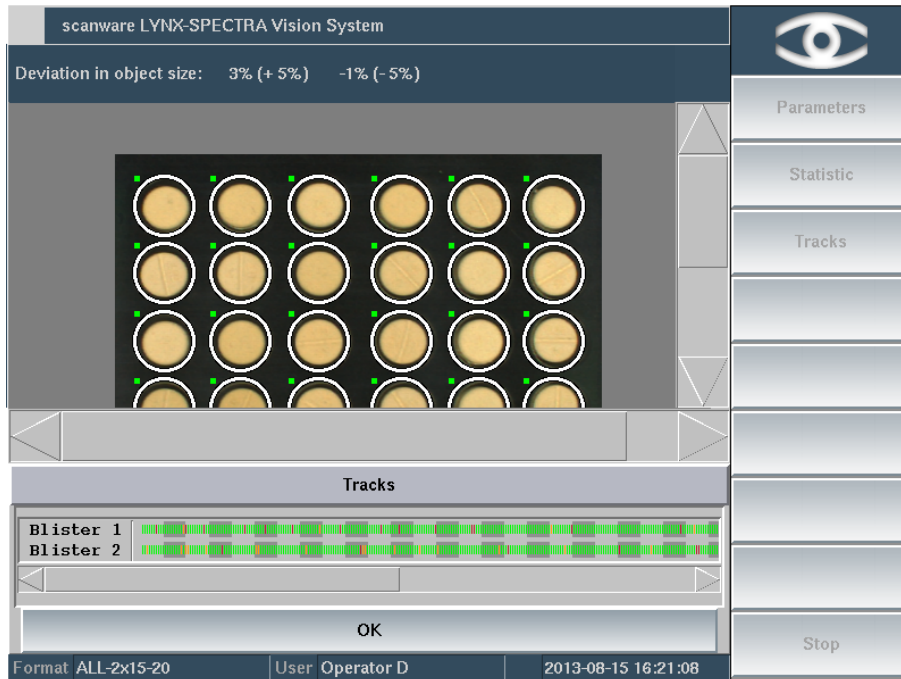


Also, the usage of already read images has been expanded. Pictures of the previous teach-in can be used for another teach-in, for example when it has been aborted due to wrong input. Since no new images need to be

made, no further rejects are caused. Furthermore, users can always view all images taken for teach-ins. This enables them to compare colours directly, optimising teach-ins.



PRESS RELEASE **scanware**



And another neat tool will be introduced at Fachpack, Nuremberg: The lane view has been expanded from 12 to up to 500 inspection results schematically displayed. This makes it very easy to spot consecutive error.

scanware electronic GmbH is a privately owned company operating on an international scale. As an independent manufacturer we develop product and code inspection systems for installation on pharmaceutical packaging equipment. With almost 25 years of experience, scanware products are tailored to individual needs of customers, highly specialized and fully compliant with GAMP requirements. Well over 1800 installations across the globe establish scanware as a renowned supplier of supreme quality equipment to all major manufacturers.

###

For further information and materials, please contact:

scanware electronic GmbH

Sandra Klein

Darmstädter Str. 9-11

64404 Bickenbach, Germany

0049 6257 9352 - 706

sandra.klein@scanware.de