

# RESEARCH & DEVELOPMENT NEWS 2014

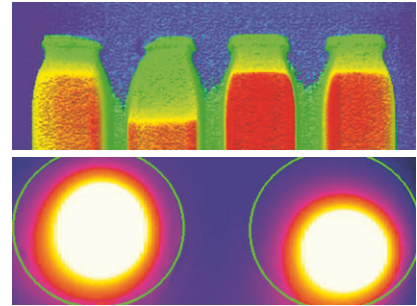


## ■ Hot Inspection

The utilisation of a thermographic camera for inspection solutions in the pharmaceutical industry is currently being developed at scanware.

Product Inspection: Inspection of liquid fill levels

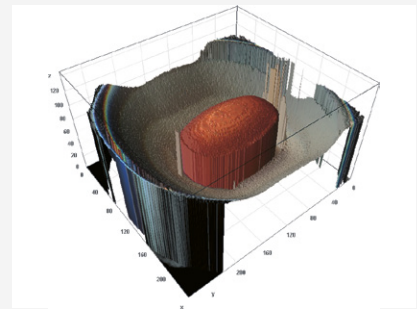
Tamper Evidence: Inspection of hot glue sealing of folding boxes



## ■ Products in 3D and Colour

The 3D Inspection System LYNX-SPECTRA 3D has revolutionised Product Inspection. A new, slim design using a newly developed illumination unit was introduced at interpack.

The evaluation of colour and height information now occurs in one single step.



## ■ 100% Bulk Security

The Product Inspection LYNX-SPECTRA offers 100% security, both on drum feeders and vibratory feeders.

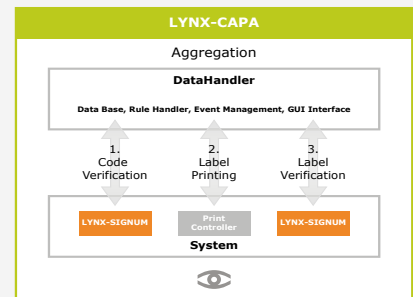
New in 2014: A standalone solution with 15 lanes, inspection system and a precise product count.



## ■ Savvy Aggregation

scanware has developed Track & Trace Solutions of the LYNX-CAPA family. All stations are designed for efficient and comfortable handling. Aggregation is regulated by the DataHandler.

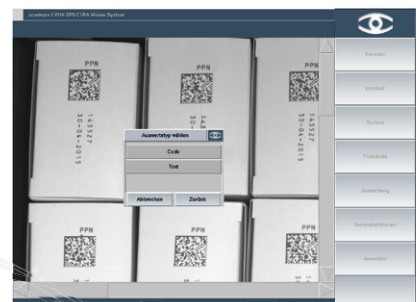
The underlying concept is simple: Every step happens in interaction with the DataHandler which handles aggregation.



## ■ Code: Check!

For Code Inspection and OCR/OCV, scanware offers precise error analysis, fast evaluation and a smart unicode library.

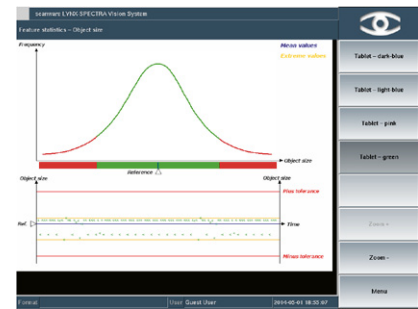
Now, the teach-in can be configured to make the process even faster.



## ■ Feature Statistics, sharp

A new evaluation statistic has been introduced which enables an even more precise evaluation of product irregularities.

The Feature Statistics not only consider the highest and lowest deviations, but also analyse how often they occur. Thus, production can be examined more closely to increase efficiency.



## ■ Deblistering under Inspection

To increase efficiency, deblistering is of particular importance with large blisters. scanware has constructed a designated inspection unit.

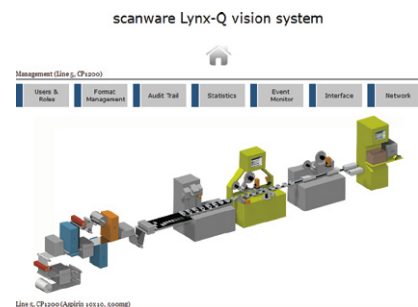
Deblistered tablets are moved one-by-one in a bowl feeder. Afterwards, a LYNX-SPECTRA CL inspects every single object from multiple sides.



## ■ New GUI

New design with the same user-friendliness: scanware is presenting a study that is currently being developed. Using a Multitouch-Screen, it is easier to use than ever before.

Animation of processes support the user. Another bonus feature: The system documentation is available online in case questions arise.



## ■ Expertise for Print on Product

In order to maintain low tolerances for product with print in a similar colour to the foil, scanware has developed designated software parameters.

Both with tablets and hard-gel capsules, the amount of text can vary considerably depending on position, for example if the print on the front and back differs in length. In this case, evaluation of product size is based on the object perimeter. Consequently, the print does not influence the evaluation.



**Find out more about our latest developments –  
in our News brochure, online or get in touch with us.**

- LYNX-SPECTRA** Product Inspection
- LYNX-SIGNUM** Code Inspection
- LYNX-FOCON** Pore Inspection
- LYNX-CAPA** Track & Trace Solutions

**scanware electronic GmbH**  
Darmstädter Straße 9-11  
D-64404 Bickenbach  
Telephon +49 6257 9352-0 Fax -22  
info@scanware.de  
www.scanware.de

International Distributors:  
Algeria | Brazil | Canada | Denmark | France | Ireland  
Italy | Jordan | Mexico | Morocco | Norway | Puerto Rico  
South Korea | Spain | Sweden | Switzerland | Tunisia  
United Kingdom | United States

**Quality is visible.**

